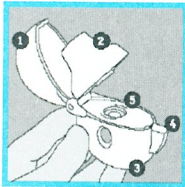


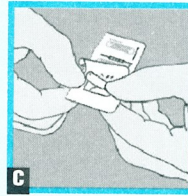
### How do you take your dose of SPIRIVA using the HandiHaler?



Taking your dose of SPIRIVA, requires four main steps: Open the blister and the HandiHaler device, insert the SPIRIVA capsule, press the HandiHaler button, and inhale your medication. (See below for details.)

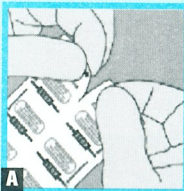
Become familiar with the components of the HandiHaler inhalation device:

- 1 dust cap      3 base      5 center chamber  
2 mouthpiece    4 piercing button



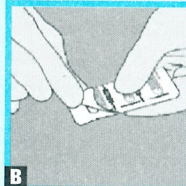
C) Capsules should always be stored in the sealed blisters and only removed immediately before use. The

#### Removing the SPIRIVA capsule from the blister.



A) SPIRIVA capsules are packaged in a blister card. Each blister card consists of two blister strips, each containing 3 capsules and joined along a perforated-cut

line. Prior to removing the first capsule from the blister card, separate the blister strips by tearing along the perforation. (Figure A)



B) The blister should be carefully opened to expose only one capsule at a time. Immediately before you are ready to use your dose of SPIRIVA, peel back the aluminum

foil using the tab until one capsule is fully visible. The foil lidding should only be peeled back as far as the **STOP** line printed on the blister foil to prevent exposure of more than one capsule. (Figure B)

drug should be used immediately after the packaging over an individual capsule is opened, or else its effectiveness may be reduced. The

blister strip should be carefully opened to expose one capsule at a time. After using the first capsule, the 2 remaining capsules should be used over the next 2 consecutive days. SPIRIVA capsules should always be stored in the blister. The blister should only be opened and the capsule removed immediately before use. If additional capsules are inadvertently exposed to air, they should not be used and should be discarded. (Figure C)

#### Please refer to Patient's Instructions for Use.

Do not store SPIRIVA capsules in the HandiHaler device.

SPIRIVA capsules are to be used only with the HandiHaler device.

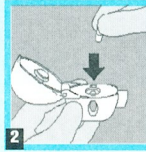
SPIRIVA capsules are intended for oral inhalation only and should not be swallowed.



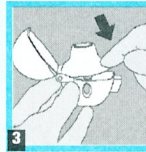
## Opening the HandiHaler device and inserting the SPIRIVA capsule.



1) **OPEN:** Open the dust cap by pulling it upwards. Then open the mouthpiece. (Figure 1)



2) **INSERT:** Place the capsule in the center chamber. It does not matter which end of the capsule is placed in the chamber. (Figure 2)



3) Close the mouthpiece **firmly until you hear a click**, leaving the dust cap open. (Figure 3)

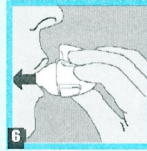
## Taking your dose of SPIRIVA.



4) **PRESS:** Hold the HandiHaler device with the mouthpiece upwards and press the piercing button completely in once, and release. This makes holes in the capsule and allows the medication to be released when you breathe in. (Figure 4)



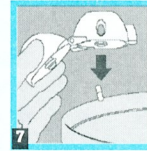
5) **Breathe out completely.** (Figure 5)  
**Important:** Do not breathe into the mouthpiece at any time.



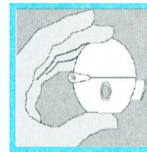
6) **INHALE:** Raise the HandiHaler device to your mouth and close your lips tightly around the mouthpiece. Keep your head in an upright position and breathe in slowly and deeply but at a rate sufficient to hear the capsule vibrate.

Breathe in until your lungs are full; then hold your breath as long as is comfortable and at the same time take the HandiHaler device out of your mouth. Resume normal breathing. (Figure 6)

**To ensure you get the full dose of SPIRIVA, you must repeat steps 5 and 6 once again.**



7) After you have finished taking your daily dose of SPIRIVA, open the mouthpiece again. Tip out the used capsule and dispose. (Figure 7)



Close the mouthpiece and dust cap for storage of your HandiHaler device.



**SPIRIVA** HandiHaler<sup>®</sup>  
(tiotropium bromide inhalation powder)

